



GLYNWOOD

Center for Regional Food and Farming

Rooted, Resilient AND Ready

ANNUAL IMPACT REPORT 2020-2021

OUR MISSION

To Ensure the Hudson Valley is a Region Defined by Food Where Farming Thrives

OUR VALUES

Economic Prosperity • Human Health
Environmental Resilience and Conservation
Social Equity • Cultural Vibrancy



Assistant Vegetable Manager Leah Garrard (Photo credit: Eva Deitch Photography).

Dear Friends,

I believe the saying goes: the only constant in life is change. And with change comes lessons and previously hidden opportunities. As I think about how Glynwood as an organization navigated a year of such extraordinary circumstances, I find I am using three words most often: **rooted**, **resilient** and **ready**.

Over the past year, we witnessed the inability of a hyper-centralized food system to endure the pressures caused by the pandemic. The extent to which food insecurity plagues all our communities was laid bare as hunger relief organizations strove to serve so many in need. The murder of George Floyd brutally demonstrated the pervasiveness of racial injustice and demanded a reckoning for all sectors of our society, including the good food movement. It has been a year of disruption, awakening and deep learning.

To respond to those realities, Glynwood **rooted** more deeply in the things we do best: listening to the farmers and food system professionals we exist to serve; offering guidance and partnership once we understand what they need most. This enabled us to resource farmers in the height of the pandemic through and beyond today, when so much remains uncertain. The strong foundation of our work also allowed us to deepen the incorporation of justice and equity into our programs, culture and governance. And that led us to innovate new programming: our Food Sovereignty Fund, which pays BIPOC, women and LGBTQ+ farmers to grow food for local food access projects and community members who need it the most—creating a regional jump in the amount of fresh, local and culturally important food that typically moves through hunger relief organizations.

This work demanded a type of **resilience** that can only come through forming authentic, strong relationships with our constituents, our communities and within our organization. Our supporters, folks like you, were asked to step up and help us dig deep. And you did. In the face of all this change and uncertainty, we were met with extraordinary generosity.

That act of faith by those who hold us accountable, coupled with the willingness of our program partners to persevere, has given me and all of us at Glynwood a tremendous boost of confidence and inspiration. There are huge challenges ahead: the continued struggle for equity within the food and farming system, the urgent need to address the climate crisis in the agricultural sector and the imperative to provide healthy food for all, not just for a few. These are big, complicated problems—but this past year has shown me one thing: we are **ready**. I hope you are, too.

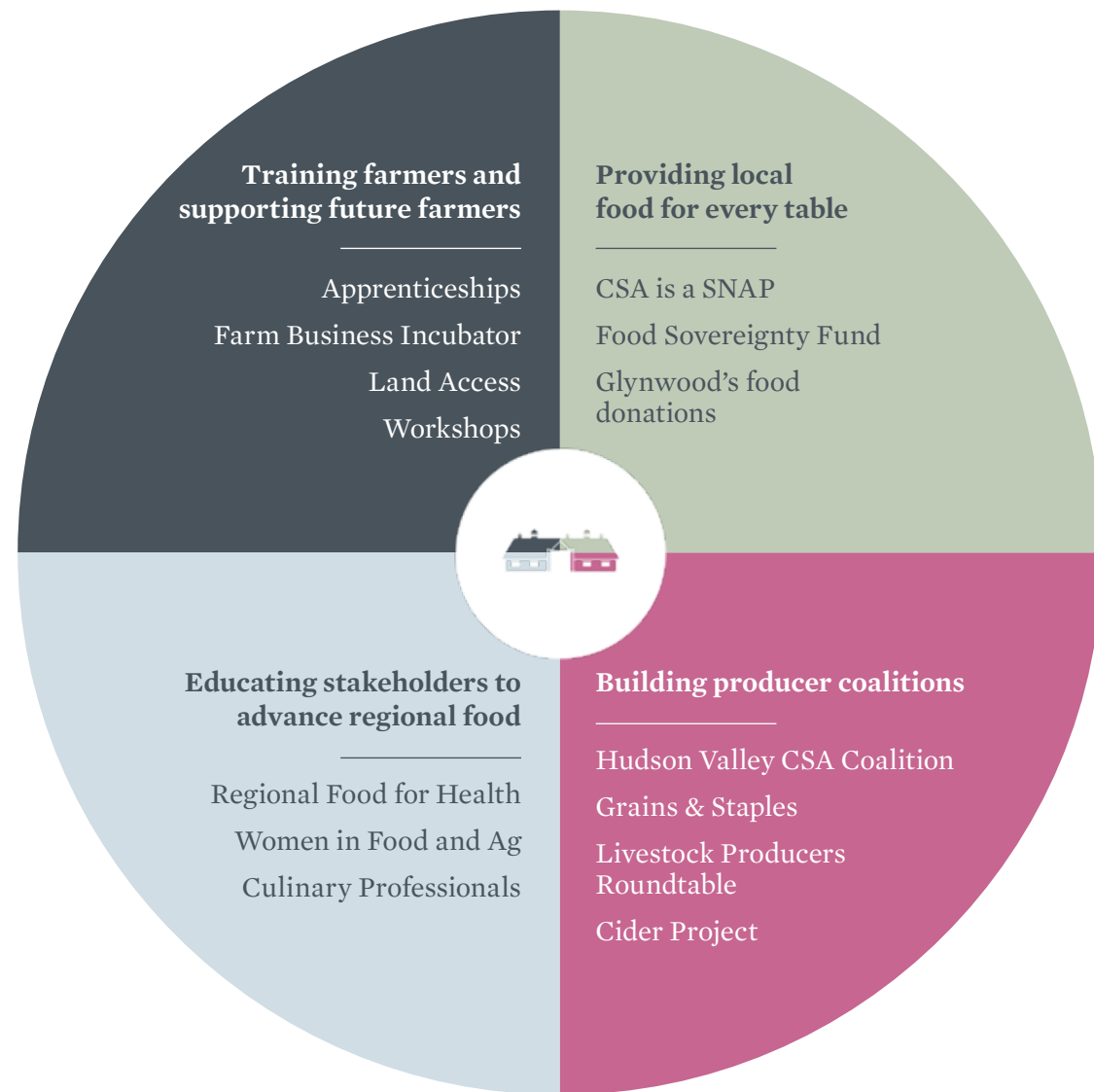
Yours in Gratitude,

Kathleen Finlay
President



Serving Food and Farming Professionals

Because of your support, we are able to develop and implement innovative and integrated projects that work together to create a regional food system built on health, resilience, reciprocity and equity. The work your donations supports covers four main initiatives:



You can learn more about each of these initiatives and projects that are building a healthier, more resilient and more equitable regional food system at glynwood.org.



Nicole Scott, Farm Manager, Livestock Operation, sets up moveable fencing for our cattle (Photo credit: Christine Ashburn Photography).



2021 Vegetable Apprentice Adeline McCaul harvesting chives (Photo credit: Eva Deitch Photography).

2020 by the numbers

163 small farm businesses supported

81,500
people directly fed by the farmers we support

66% of the **100+** farms
in our CSA Coalition reported selling out CSA shares

an increase of **50%** over the
year before

up from **41%** in 2019

14,670

acres of land in the
Hudson Valley
stewarded by farmers
we served last year

Local meat and vegetables
providing over

100,000

meals distributed to people who
rely on free groceries
(an estimated 12%
of New York residents)
through our Local Food for
Every Table initiative

\$67,500

paid by Glynwood to local farmers
for food they produced
and distributed to community
food access projects

1,100

hours of technical assistance provided by Glynwood staff to the farmers we serve—
the multiplier effect of this support means we saved farmers thousands of hours of
valuable time by being a trusted and dedicated “phone a friend”

Ideas Worth Investing In

Your support makes it possible for us to continue our core projects while giving us the resources we need to grow and expand our impact through new projects and collaborations. Here are just a few of the new ideas on the horizon.

Clockwise from top right: Glynwood's apprentices hosted apprentices from our partners at DIG Acres for a learning exchange, 2021; weeding the rice paddies at a volunteer day at Incubator participant Ever-Growing Family Farm, 2021; 2021 Vegetable Apprentice Andrea Mitchell works on building new farm infrastructure.

Feeding the Future

Over the next four years, we will train **The Hudson Valley Hundred**: 100 management-ready farmers on viable businesses who will transform the face of farming in the Hudson Valley. This initiative will include launching a brand new regional apprenticeship program, continuing our support of entrepreneurs in the Farm Business Incubator, and investing in the leadership development of trainers, faculty and changemakers who represent the diversity of our region's farming communities.



Photo credit: Eva Deitch

PARTNERSHIPS MAKE ALL THE DIFFERENCE

Here at Glynwood, we depend on the robust and diverse patchwork of partners, changemakers and institutions who give our work meaning and extend our reach. While the majority of the 65 apprentices we've trained focus on rural agricultural systems, urban agriculture is playing an increasingly important role in food sovereignty. Beginning in 2021, through a partnership with Scenic Hudson, Poughkeepsie Farm Project and the Ecological Citizens Project, Glynwood's farmer training team will provide mentorship and technical assistance to a brand new urban community farm in Poughkeepsie: The Pershing Avenue Neighborhood Farm. This initiative will help us better understand how we can serve food efforts in the urban areas of our region.



Providing Local Food for Every Table

We aspire to expand the Food Sovereignty Fund rapidly in the years ahead as we seek to resource Food Sovereignty Hubs across the region. By investing in localized knowledge, expertise and infrastructure, we will scale up the amount of nutrient-dense, culturally appropriate food from local farms that is accessible, available and affordable for people in our region facing food insecurity. In 2021, we are increasing the size of the fund tenfold from its initial pilot year in 2020. For more information on the 17 farms being supported across the Hudson Valley this year, see pg. 12-13 "Food Sovereignty Grows Here."

Clockwise from top right: Glynwood's produce being distributed to clients of Philipstown Food Pantry (Photo credit: Amy Scott); CSA is a SNAP shares distribution in Peekskill, 2020.; Instagram post from 2020 Food Sovereignty Fund partner Second Chance Foods.



Instagram post interface showing a post from @secondchancefoods. The post text reads: "While swiss chard will win every beauty contest, we made some other delicious food this week that's just not quite as photogenic! Thanks to @glynwoodorg's Food Sovereignty Fund we get to cook with some incredible meat from @chaseholmfarm. On this menu was sautéed swiss chard, Chicken Scarpariello (using @chaseholmfarm sausage), Garlicky Cuban Pork (@chaseholmfarm pork shoulder), roasted cauliflower, green tomato chutney (yummy with the pork!) and green tomato salsa. All this food is being distributed to our neighbors struggling with food security. With thanks to our food donors who contributed to this meal @hilltophanoverfarm @glynwoodorg @cceorangectyny (gleaning program) the gardens for @pisticciny and @traderjoes". The post is dated November 4 and shows it was liked by @glynwoodorg and others. The interface includes icons for heart, comment, share, and bookmark, and a bottom navigation bar with home, search, post, heart, and profile icons.

Building Producer Coalitions

We are expanding the production sectors of our work by launching a new focus area: grains and staples. Bringing together stakeholders—from producers to bakers to eaters—we will work to continue to build markets for emerging crops, and will ensure that this sector prioritizes the adoption of climate resilient strategies.



GROWING THE GRAINSHED

To lead our new work in grains and staples, we welcomed June Russell as Director of Regional Food Programs in spring 2021. With June's arrival, we are bringing on board her wealth of experience developing innovative solutions to regional challenges and adding an important sector to our work promoting a Hudson Valley foodshed. During her 17-year tenure at GrowNYC, June was responsible for the introduction of close to 50 unique and distinctive grain and staple varieties to the Northeast and built the groundbreaking social enterprise brand, GrowNYC Grains.

We're not the only ones who are excited to welcome June to the team. Sharon Burns-Leader, COO and Co-Owner of Bread Alone bakery offered: "The fact that locally grown flour is available anywhere in the Northeast is directly due to a small group of people who shepherded the grain unceremoniously but with little wavering into the bowls of bakers, chefs and millers. June Russell is one of the first to have realized that an economic lever had to be pulled in order to create the demand needed to secure the supply... June's work has added value to the plates and pockets of all manners of people who want to eat better, feed more people and keep as much carbon in the soil as possible."



June Russell, Director of Regional Food, leads the Glynwood Grains and Staples project.



Dr. Robert Graham leads a Regional Cooking for Health workshop at Glynwood in 2019 (Photo credit: Christine Ashburn Photography).

Educating Stakeholders to Advance Regional Food

In the coming year we will engage health care practitioners around the benefits of regional, regenerative agriculture to human health and wellness, specifically by exploring the development of a residency program at Glynwood through partnership with recognized leaders in health education.



Michelle Hughes, Associate Director of Regional Food, leads our work at the intersection of regional food and health.

INVESTING IN HEALTH

Our deeper dive into the intersection of our food system and our health system took an important step in late 2020 when Michelle Hughes (pictured left) joined our team as Associate Director of Regional Food.

Michelle holds a BS from Rutgers in Conservation Ecology and Agroecology, and recently completed a course in herbalism with 7Song at the Northeast School of Botanical Medicine. In addition, Michelle brings to Glynwood her passion for connecting diverse people with varied experiences and expertise to create a more just and resilient food system in the Hudson Valley. Michelle has done everything from co-founding and co-directing Rolling Grocer 19 (an innovative food justice project anchored by a full-line grocery store in Hudson, NY) to helping 20 immigrant families establish independent farm businesses on a combined 400 acres through her Directorship at GrowNYC's FARMRoots and New Farmer Development Programs.



Photos courtesy of Phillis Bridge Farm, a 2021 participant in the Food Sovereignty Fund (Photo credit: Eva Deitch Photography).

Food Sovereignty Grows Here

The Food Sovereignty Fund was launched in 2020 in response to the vulnerabilities of our regional food system, which were illuminated by the pandemic. The program pays small-scale local farmers to grow food for hunger relief in their communities and builds partnerships between farms and food access projects. Thanks to the generosity of over 400 individual supporters and through a new partnership with the Episcopal Charities of the Diocese of NY, Glynwood will be contracting \$150,000 worth of Food Sovereignty Fund contracts for the 2021 growing season.

The map to the right represents the farms and food access partners who will be served through these contracts in 2021. 100% of the farms receiving funding through this program in 2021 are led by farmers who identify as BIPOC, LGBTQ+ or women.

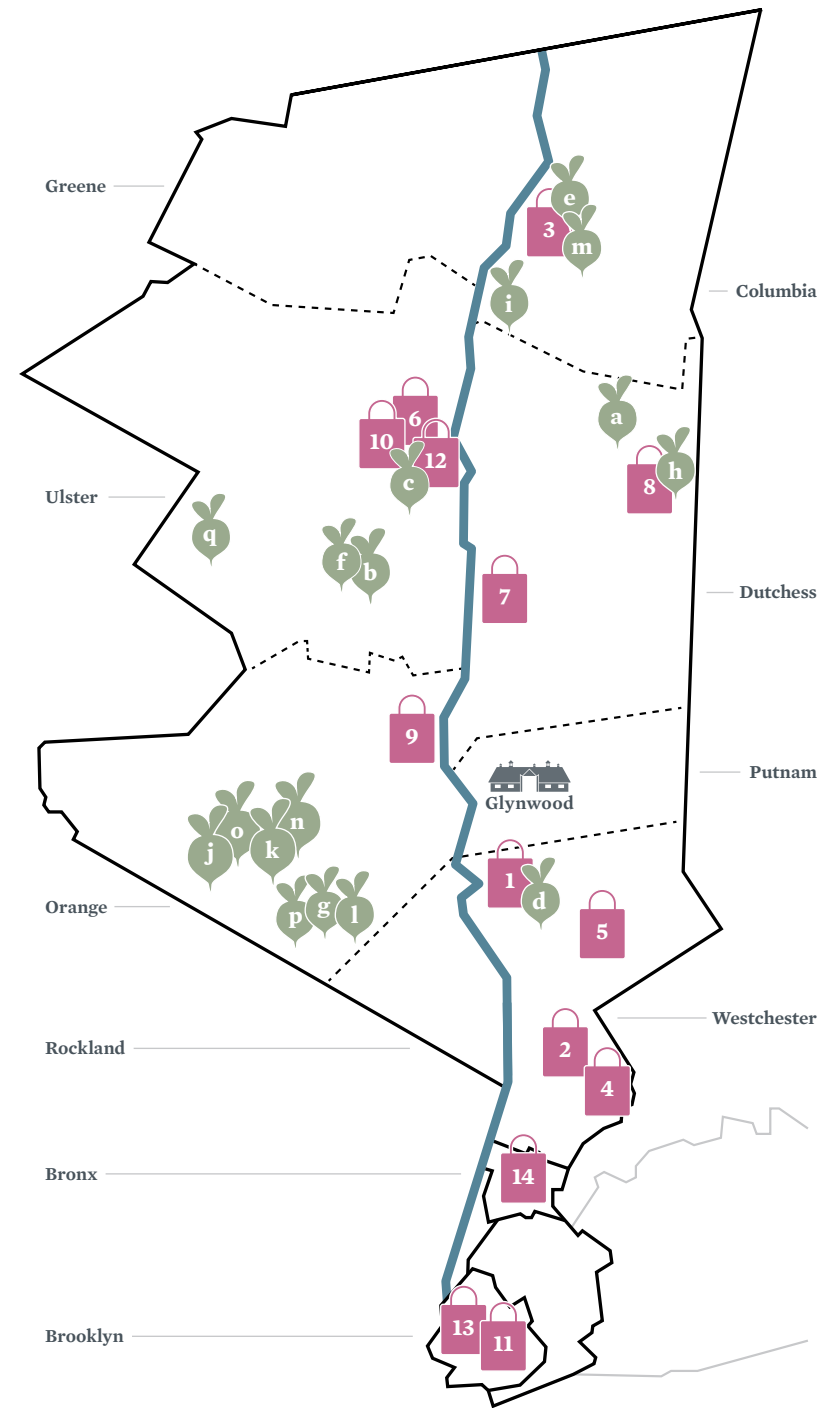
The 2021 Food Sovereignty Fund Community

2021 FOOD ACCESS PARTNERS

- 1 Fred's Pantry, Peekskill
- 2 Grace White Plains, White Plains
- 3 Hudson Youth Center, Hudson
- 4 Meals on Main, Port Chester
- 5 Mt. Kisco Interfaith Food Pantry, Mt. Kisco
- 6 Ulster Immigrant Defense Fund, Kingston
- 7 Dutchess Outreach, Poughkeepsie
- 8 North East Community Center, Millerton
- 9 Our Core, Newburgh
- 10 People's Place, Kingston
- 11 Mixteca Organización, Brooklyn
- 12 Kingston Emergency Food Collaborative, Kingston
- 13 Center for Family Life, Brooklyn
- 14 La Familia Verde, Bronx

2021 FARMS

- a Chaseholm Farm, Pine Plains
- b Farm Fresh Caribbean Growers, New Paltz
- c Good Chi Farm, Kingston
- d Hemlock Hill Farm, Cortlandt
- e Letterbox Farm, Hudson
- f Phillis Bridge Farm Project, New Paltz
- g Rise & Root Farm, Chester
- h Rock Steady Farm, Millerton
- i Sweet Freedom Farm, Germantown
- j Angel Family Farm, Goshen
- k Fresh Radish Farm, Goshen
- l Huerta Family Farm, Chester
- m Katherine Chiu, Kingston
- n MimoMex Farm, Goshen
- o R&R Produce, Goshen
- p The Grandpa Farm, Chester
- q The Three Sisters Farm, Kerhonksen



The Food Sovereignty Fund is made possible through a partnership with The Episcopal Charities of the Diocese of NY, as well as thanks to the generous contributions of many individual and foundation supporters.

Stories of Impact

They will feed the future

So often, the farmers we set out to support end up giving back in unforeseen ways. This is the story of the evolution of one such partnership.

Rock Steady Farm started working with Glynwood as a participant in the Hudson Valley Farm Business Incubator in 2017. At that time, Glynwood Director of Farmer Training, Dave Llewellyn, provided them operational and technical assistance on topics such as long-term financial planning and soil fertility. As an early participant in the Incubator program, they gave great constructive feedback on their experience, which has helped us better serve other farmers. Since then, they have participated as presenters in intensive workshops for newer cohorts of Incubator farms, and they've become essential collaborators in our Regional Food Programs.

When members of the Hudson Valley CSA Coalition expressed to Glynwood a desire to help SNAP recipients better access and afford CSA shares, Rock Steady's highly successful subsidized share program served as a primary model. Inspired by their leadership, and responding to the need to support other farms' ability to fundraise for these types of programs, Glynwood committed to helping more farms adopt this model and CSA is a SNAP was born. Rock Steady continues to serve as a mentor farm through this project to this day, and has been engaged by Glynwood to lead trainings preparing farms to serve SNAP customers.

Most recently, Rock Steady was deeply involved in the formation of the Food Sovereignty Fund, convening the initial conversations in spring 2020 among local farms and community-based stakeholders who wanted desperately to support food justice in their communities, especially in light of the pandemic. Because of the trust and partnership we had built through their involvement with the Incubator and CSA is a SNAP, Rock Steady supported Glynwood in moving this work forward and helping expand it to a regional scale. Rock Steady farmers serve on the project's Accountability Council, act as technical assistance providers for other farmers contracted by the Food Sovereignty Fund, and are also recipients of the fund themselves (along with 16 additional farms).

Glynwood's relationship with Rock Steady is an example of how we are resourcing community-based power and on-the-ground expertise across our food system. From dealing with climate change to answering the call for social and racial justice to feeding their communities, the farmers we serve are often the ones setting the pace. Your donations make it possible for us to continue supporting them in their evolution and amplifying their leadership.



Photos courtesy of Poughkeepsie Farm Project, Hudson Valley CSA Coalition member farm and CSA is a SNAP partner (Photo credit: Eva Deitch Photography).



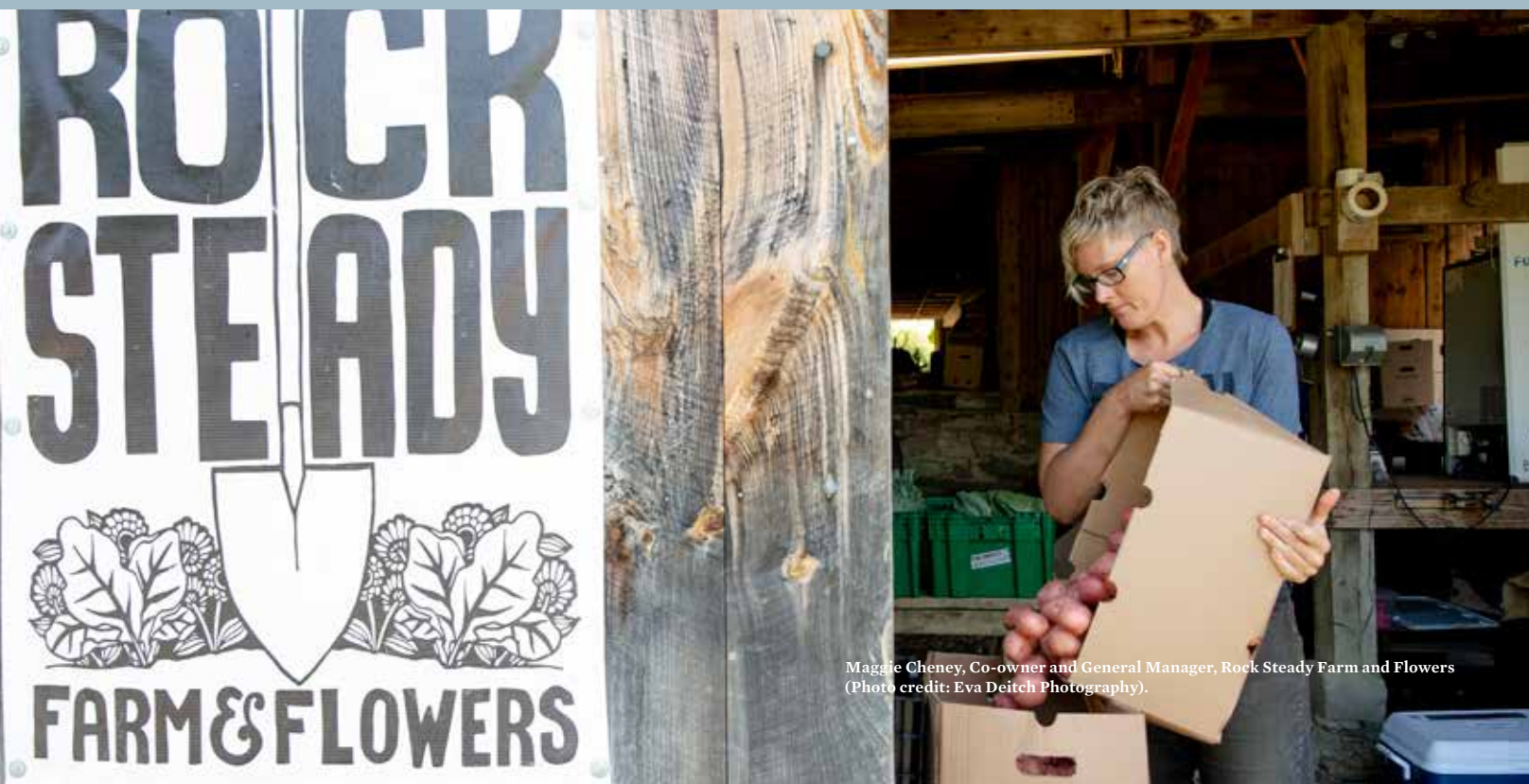
Community Supported Agriculture's moment of truth

Helping CSA farmers pivot to a new reality and emerging stronger than ever.

In the spring of 2020, as restaurants closed and global supply chains strained under the pressure of the pandemic, Hudson Valley farmers were forced to reconsider their crop plans and market channels. Consumers, too, had to adjust to a new norm. With fewer prepared meal options and more anxiety in every trip to the grocery store, families scrambled to find ways to get healthy, delicious food on the table in a way that felt safe.

A common response was to turn to Community Supported Agriculture (CSA): a low-contact, direct-to-consumer model in which people buy a pre-paid farm "membership" and receive farm-fresh produce, meat, dairy, or other products throughout the growing season. As more and more Hudson Valley farms dropped wholesale accounts and adopted CSA models last spring, the Hudson Valley CSA Coalition—a network of over 100 farms facilitated by Glynwood since 2016—sprang into action. Last year, a total of 20 new farms joined our Coalition website, enabling them to reach potential CSA members who can search for farms by ZIP code or share type. Our first-ever Virtual CSA Fair resulted in the sale of over \$15,000 worth of shares from 8 different farms. Our CSA is a SNAP program provided discounted weekly produce boxes from five different Coalition farms to close to 100 SNAP customers in the Hudson Valley and New York City. Finally, our weekly community calls made a space for farmers to share safety protocols, distribution methods, customer marketing techniques, and emotional support during an uncertain and isolating time.

The impact of this work is reaping dividends for the farmers your gifts support: over 60% of CSA Coalition farms reported selling out of CSA shares in 2020, up from 41% in 2019 and 30% in 2018. As CSA continues to grow in popularity, Glynwood remains committed to educating Hudson Valley consumers about CSA, promoting the wide range of share options available in our region, and building systems that make CSA accessible to as many people as possible.



Maggie Cheney, Co-owner and General Manager, Rock Steady Farm and Flowers (Photo credit: Eva Deitch Photography).



What's in a Glass?

Understanding the legacy of cider so we can craft more inclusive and transparent narratives for the future.

When it comes to food and beverage, it is crucial to understand origins: only then can we tell a truthful, meaningful narrative of the food on our plate or the drink in our glass.

In the summer of 2020, Glynwood Senior Director of Regional Food Programs Megan Larmer and Glynwood Ambassador Stephen Satterfield sat down over Zoom to discuss the origins of American cider. Using race as their primary analytical lens, they both introduced broad frameworks—the insidious legacies of slavery and extractive labor in American culture and agriculture—while examining specific examples related to cider. Stephen shared his personal experience as a sommelier and the challenge to authority he, like so many Black food and beverage experts, faced on a daily basis. Megan unpacked the layered history of Hudson Valley apple Esopus Spitzenburg. Although the apple is best known for reputedly having been the preferred variety of Thomas Jefferson, both the fruit and its most famous eater have more complicated stories. The town of Esopus (where the apple was first discovered) is named after an Indigenous tribe of the Lenape people who were driven off of their land by settlers; what's more, Esopus was the birthplace of abolitionist and women's rights activist Sojourner Truth. Thomas Jefferson enjoyed drinking cider in addition to eating apples. It is believed that much of Jefferson's cider was grown and produced at his Monticello plantation by enslaved people, and that Jupiter Evans, an enslaved man given to Jefferson when he turned 21 years old, was the principal cider maker.

The origins of cider in America are riddled with injustice and uncelebrated expertise, both of which persist in the industry today. Megan and Stephen's rich conversation provided a launching point from which Glynwood and the New York Cider Association have continued to center racial justice in their work. Glynwood facilitated the formation of the NYCA social justice committee, which hosted a series of six seminars with Dr. J Jackson-Beckham, a leader in equity and diversity in the craft beverage industry, in spring 2021. Thanks to the support we receive through our partnership with Angry Orchard and Boston Beer—a partnership spanning over five years—we are able to continue learning and sharing about the origins of cider, including these stories in our cider narratives, and identifying actionable steps to make the New York cider industry a leader in equity, inclusivity, and justice.



Megan Larmer, Senior Director of Regional Food.



Stephen Satterfield, Multimedia producer, food writer, Glynwood Ambassador.



One of our AWA Certified Grass-fed Dexter-Devon cross cattle (Photo credit: Christine Ashburn Photography).



An apprentice constructs a modular high tunnel, 2020 (Photo credit: Amy Scott Photography).



Vegetable apprentices bag fresh greens for donation to our gleaning partner, Second Chance Foods, 2021 (Photo credit: Eva Deitch Photography).



Farm Manager, Vegetable Production, Jarret Nelson (Photo credit: Amy Scott Photography).

You make all the difference

Thank you for your generous and thoughtful gifts to support the future of food in the Hudson Valley. Each and every donation helps train farmers and food professionals and promotes a more sustainable regional food system that is healthy, equitable and resilient. We are enormously grateful to the following supporters of Glynwood’s work.

Individual Supporters

Catarina Abend
Valentin Abend
Anne Ackerley
Mary Adams
Munawar Ahmed
Darsie Alexander
John & Judy Allen
Susan Allen
Deborah Alsup
Michelle Alumkal
John & Sheila Amato
Bijan Amini
Elizabeth Anderson
Steve Anderson
Tom Andruss
Kate Anstreicher
Kurt Anstreicher & Jane Van Voorhis
Alison Anthoine
Lisa Apkon
Ralph & Robin Ardit
Carly & Eric Arnold
Elyse & Joshua Arnow
Talia Arnow
Johanna Asher
Ronald Aubert
Rachel Axinn
Phil & Robin Azzollini
Brian Babcock-Lumish
Robert & Marian Bach
Jodi Balkan & Chris Dickerson
Carrie Balkcom
Lillian & Paul Banas
Kathleen Banks
Eileen Banyra
Beth Barbakoff
Sally Barker
Carrie Barratt & Jason Amis
Frank W. Barrie
Amy Bell
Janet Benton
Deb Bernadini & Tony Margherita
Nancy & Tom Berner
Nina Bernstein
Scott Berrie
Shawn Berry
Vivian Berry
Fritz Beshar & Peter Lehner
David Beveridge
Tracey Bilski
Liz Birch
Kate Bittman
Barry Bohrer
Christine Bokhour
Matt Bolssen & Marisa R. Lee
Maria M. Bonsanti
Carla Borelli & Donald May
Shelley Boris & Peter Lewis
Loring Boyden
Angelica Braestrup
Mirna Alicia Brahms
Laura Brail
Susan Branagan
Kaija Braus
Tyler & Alex Brebberman
Ken & Cynthia Bressler
John Brett & Jane Strong
Jay Britton & Tracy Ziemer
G. Kirby & JoAnn Brown
Melissa Brown
Nancy & Rick Brownell

Adam Brunk & Madeleine Haddon
Michael Brunk
Christopher Buck & Hara Schwartz
Theodora Budnik
Mary Elizabeth & Jeffrey Bunzel
Ann Burgunder
Kevin Burke & David Kimelman
Oliver & Emily Bushnell
Serra Butash
Timothy Buzinski
Kati Byrne
Anne Cabot
F. Colin & Paula Cabot
George Camp
Catherine Carnevale
James & Tara Carroll
Seamus Carroll & Marie Weick
Robin Carter
Linda Castrilli
Violet Castro-Rivenburgh
Carmen & Richard Cataldo
Michael Cavanaugh
Vivienne Chan
Nina Charnoff
Chevy & Jayni Chase
Kim & Richard Chirls
Anne Christian
Chinh Chu
Dumont Clarke & Shirley Linn
David & Loreen Cohen
Deirdre Cohen
Bradley & Amanda Coley
Rachel Comey
John Connolly
Christina Connors
Colleen Conway
Richard & Elizabeth Corio
Jim Corless
Jeremy Crandall
Kate Crane
Joy & Jeff Crist
Allison Cross
James & Kara Cross
Bruce Croushor
Beth & Wyatt Crowell
Joe Curto
Candace & Cole D'Addario
Mark & Lauren Daisley
Bob Dandrew
Anthony Davidowitz
Robert McAulay & Ann Davis
Howard & Randi Davis
Jane Davis
Michael Davis
Nicole Davis
Mary C. Debourbon
Lauren Dellolio
Lisa Denby & Ron Orland
Cynthia Dessy
David Diamond & Karen Zukowski
Stephanie Diamond & Ethan Kerr
Maggie Dickinson
Natasha Didonato
Yaysoon & Sundance DiGiovanni
Pamela Doan
Kei Doi & Therese Suarez
Naomi Dorsey
Elaine & David Douds
Margaret Doyle
Alexandra Dubroff
Steven Dubroff

Amy Dul
Jim Dunn
Sanjyot Dunung
Erna DuPuis
Nancy P. Durr
Laurel Edge & John Clendenen
Rebecca Edwards
Diana Egantz
Robert & Cathie Elliott
Nancy Elting
Elizabeth Emens
Marcia & Mark Emmons
Pepper Evans & Robert Lieber
Helen Evarts
Jonathan Farber
Olivia & John Farr
Victoria Feder
Nadine & Henry Feldman
Mary Ellen Feller
Felicity Fellows
Jody Redhage Ferber
Alexander Bret Ferree
Peter & Patty Findlay
Kathleen Finlay & Mark Bittman
Veronique Firkusny
Elizabeth & Irvine Flinn
Christine Foertsch & Mike McKee
Steve Fondiller
Lori Fontanes
Krystal Ford & Darien Ford
Mark Forziati & Christina Ferri
Amy Goldman Fowler & Cary Fowler
Bob & Gloria Fox
Rich Franco & Linda Lange
Joseph Fratesi & Lindsey Taylor
Carmela Frattellone
Kimberly Fredericks
Jere & Cheryl Freel
Wendy Frieder
Jeremiah & Carolyn Friedman
Calley Frith
Lucie Fuller-Kling & David Holliday
Pamela Gaffney
Jonathan & MaryBeth Galente
Paulette, John & Jennifer Galvin
Kristin Gamble
Jill Garland
Jennifer Garofalo
Cornelia Gaty
Lila Gault
Bruce Geller
Rosalie Genevro
Sezelle Gereau, MD & Theodore Haber
Jennifer Gibbs
Lynne Gilson
Benjamin & Jaclene Ginnel
Josh Ginsberg
Barbara Giordano
Jena Girouard
Melissa Glass
Priscilla Goldfarb
Jessica Goldfin
Dorian Goldman & Marvin Israelow
Haley Gonella
Elizabeth Gonzales
Kyle Good
Rachel Goodfriend & Gary McGaha
Sara Gordon
Laura Gorham & John Norton
Jill Gottlieb
Sara Grady

Robert Greenfield
Matthew Greenhouse
James & Lenny Grefig
Ann Elizabeth Greig
Nick Groombridge & Kim Conner
Marilyn Gross
Diane Gubelli
Jonea Gurwitt
Joan Gussow, PhD
Angela Ha
Steve Haggerty & Kimberly Throm
Sally Hall
Tim & Randy Hall
Trish Hall & Larry Wolhandler
Monika Hansen
Charlotte Happle
Laura & Ben Harris
Renee Harris
Margo Hasen
Serena W. Hatch
Sara Heaton
Dean Hee
Erica Helms
Kyle & Jacqueline Henderson
Thomas & Katherine Hendrix
Anne Hess & Craig Kaplan
Pamela Hess
Kimberly Heston
May Brawley Hill
Eric & Patricia Hine
Diana Hird
LeRoy Hogan
Steven Holley
Lisa Holmes & Bob Stern
Vreni Hommes
Hayden Horowitz
Jolie Hunt & William Potter
Sandra Hurse
L. Stockton Illoway
Shigematsu & Elizabeth Inayoshi
Vincent Inconiglios & Donna Rafferty
Rose Inman
Kevin Irby
Donna Jacobowitz
Alice Jankell Shatkin
Mark Jelley
Isaac Jensen
Crista Jentile & Andrew Fuller
Michele Johnson
Barbara Jordan
Colleen Joyce & Joseph Hanczor
Tatiana Kaletsch
Brian & Barbara Kanner
Samantha Kappagoda & David Mordecai
Lawrence & Elizabeth Susman Karp
Adriana Kearney
Lauren Kelly
Ali & Akari Khan
Ellen & Ike Kier
Don & Gay Kimelman
Fred L. Kirschenmann, PhD
Rosalie Kissel
Joseph Kling
Lindsay & Alexander Klosterkemper
Kathleen Koch
Melissa & Lewis Kohl
Katherine Konecky
Kitty & Stuart Konecky
Pat Konecky
Suzy Konecky & Matthew Ball
Shariff Koya & Kanchan Koya, Ph.D.
Sara Kozak & James Sharper
Linda Kozlowski
Trudy Kramer
Judah & Michele Kraushaar
Linn W. Krieg
Zopari Kristjanson & Stefan Springman
Samuel Krugman
Leland Krumenacker
Richard & Natasha Krupp
Lars & Marit Kulleseid
Aric & Michelle Kupper

Barbara & Richard Kurz
Dorothy Kurz
Pamela LaLonde
Douglas Land & Lynn Peebles
Maggi Landau
Celia & J. Christopher Lang
Megan Larmer
Kim Larson & Gary Knell
Ashley Latham
Patricia Latham
Kirsti A. Lattu
Thorsten Leiduck
Donna Lennard
Catherine Lewandowski
Leslie Lewis & Anthony Post
Nancy Lewson Kurz
John Lichtenstein
Donna Light
Kelley Linhardt
Susan Lipsey
Toni Liquori
Barry & Jean Llewellyn
David & Carolyn Llewellyn
Danielle Locastro & Michael Musso
Chip Loewenson & Susan Brune
Joseph Pell Lombardi
Bevis & Clara Longstreth
Arthur Lopatin
Haylin Low
George & Judy Lowry
Vicky Lowry
Alexandra Lunt
Larry Lunt
Heidi Lurensky
Samantha Lutzer
Victoria Mabrey
Madeleine MacNeil
Claudia Malloy
Simone Margulies
Helene Marsh
Jessica Marshall
Jodee Martin
Vicki Marwell
Elizabeth Matos
Nancy Matsumoto
Caroleana M. Mattos
Doris & David May
Julie Mayville
Kristin McArdle
Davis McCallum
Jen McCreery
Dale McDonald
Nanci & Damian McDonald
Michael McGoff
Nicole McGrew
Lianne McKhann
Jeanne McLaurin
Maureen McLennon
John & Joan Meagle
Sean Meehan & Heather Hooks
Shelley Meltzer
Annie Mennes & David Minkin
Friedrike Merck
Josephine Merck
Ms. Messinger
Christien Methot
Christian & Mary Beth Meyer
Rosamond Pope & Jake Meyer
Avery Miller
Diane & Paul Miller
Katharine Millonzi
Jilian Mincer
John & Marilyn Mitchell
Tomoko Miyahara
David Moffitt
Judith Mogul & Daniel Kramer
Nancy Montgomery
Shelley & David Mortimer
Elissa Moses
Arnold Moss & Nancy Abraham
Susanne Moss
Meredith Mundy

Daniel Murphy & Katie-Jane Bailey
Sharon Nachamkin
Michele Nassetta
Ariel Nathanson
Nancy Nayar
Deborah Needleman & Jacob Weisberg
William Nesbitt & Michele deSavigny
Marion Nestle MPH, PhD
Brian Newell
Blake & Belle Newton
Eva Nilsson-Smith
Robert & Orly Nobel
Leslie Nowinski
Christopher O'Brien
D. Bryce & Samantha O'Brien
Nicholas O'Brien
Wendy O'Brien
Andres O'Hara
Vlada O'Hara
Michael O'Leary
Sara O'Leary
Sam Obstfeld
Drew Olsen
David Orentreich & Marina Killery
Frederick Osborn & Anne Osborn
George & Gloria Pacchiana
Henry Paciullo
Gina Paoloni & Joseph Grunfield
Nicholas Parisi
Amy Pasciucco
David Paskin
Lanny Paykin & Laura Hamilton-Paykin
Carolyn Peters
Emma Phillips
Barbara Picower
Clare Pierson
Martin Ping
Jessica Pisano
Thad & Antonia Pitney
Robert & Veronique Choa Pittman
Michelle Pleim
Joseph & Kathy Plummer
Jan-Willem Poels-Luna
Diana Polack
Janis Polastre
Sheldon Pollock
Alan Potts
Mary Elizabeth Prall
Nat & Anita Prentice
Todd & Lauren Prigozen
Tom Pritchard & Jody Rhone
Drew Prochaska
Linda & James Quella
Robert & Janet Quinn
Patrick Quish
Adela Ramirez & Shawn Fell
Scott Ramsey
Jay Rao
John & Carolyn Rapalje
Lisa & Timothy Rasic
Anne Rasmussen
Emily & Gil Raviv
Alex Reese & Alison Spear
Jane E. Regan
Robert Reusche
Laurie Rhodes
Frederic Rich
Allison Righter
Susan Rodriguez & Charles Lowry
Jeanne Rollins
Lucy Rollins
James Rooke & Claire Chambers
Jonathan & Diana Rose
Kellye Rosenheim
Laura Ross
Jessica Roth & Benjamin Lawsky
Mark & Suzie Roth
Lew & Wendy Rubin
Mitchell Rubin
Betty Russell
Sarah Salem
Denise & Tim Santo

Harriet Hawes Savage
 Lauri Sawyer
 Charlie Scheidt
 Jennifer Schmalz
 Marian Schoettle
 Karen Schoolman
 Patricia Schories & Harry Bolick
 Pamela Schumann & Richard Keller
 Nicole Scott
 Margot Seigle
 Leigh Seippel
 Brealyn Sellers
 Christine Sergent
 Enrique Sevilla
 Dan Shannon & Lillian Jagendorf
 Todd Shapera
 Christopher & Alison Shaw
 Lindsay & Brian Shea
 Larry & Janice Shepps
 Toby Shimin
 Katrina Shindledecker
 Adrienne Shulman
 Amy Silverstein
 Rebecca Simone
 Karen & Mark Simons
 Virginia Slattery
 Gail Small
 Brendan Smith
 Mary Ann Dorsey Smith
 Ellery Smith
 Emeline Smith
 Jenn Smith
 John P. Smith
 Mara Smith
 Matthew & Vanessa Kelly Smith
 Meghan Smith
 Michael Smith
 Michelle D. Smith
 Owen Smith
 Richard Smith
 Tim Smith
 Steven Solinsky
 Mildred Solomon
 Stephan & Susan Souder-Russo
 Giorgio Spanu & Nancy Olnick
 Jennifer Speers
 Audrey Spiegel
 Janet Spitzer
 Toba Spitzer
 David & Sarah Stack
 Evelyn & Wendyll Stark
 Craig Stein
 Rick Steinberg & Ann Herington
 Mallory Stellato
 Heidi Stephens & Matt Koch
 Paul Stermer
 Beatrice Stern
 Peter Stillman & Liliane Salama
 Richard & Maureen Stripp
 Daniel Strol & Jenny Evans
 Jane Strong
 Sheryl Sturges
 Alejandro Sucre
 James Sumner & Alison Hall
 William Sussman
 Rebecca Swan
 Mark Swartz
 Linda Sweet
 Anne Symmes & Steven Ives
 Lisa Taggart
 Beverly & Bruce Taylor
 Carl Bon Tempo
 Anthony Thesing
 Willy & Christine Thompson
 Rebekah Hannah Tighe
 Ethan Timm & Erin Muir
 Tyson Tinsley & Angela Thompson-Tinsley
 Vicki Tobar
 Tina Tockarshewsky
 Freya N. Toedter
 Neal Tomann

Sarah & Brian Tormey
 Desiree Tuttle
 Rochelle Udell & Douglas Turshen
 Martha Upton & Peter Davis
 Kristine & Jay Vallandingham
 Barbara Van Bergen
 Tanya Van Sant
 Alan Vardy & Shasta Crombie
 Kimberly B. Vargo
 Alexander Vaughn
 John Velonis
 Jarren & Liesel Vink
 Ken Vittor & Judith Aisen
 Richard Wake
 Mary Waldner
 Jennet Walker & John Auerbach
 Paul Watterson & Stephanie Breslow
 Judith & Jeremy Walsh
 Robert Walters
 Gerry Wang
 Katy Moss Warner
 David Wasserman & Kate Solomon
 Brett Waszkelewicz
 Caitlin Watterson
 Elizabeth Weinstein
 Vera & Myles Weintraub
 Wesley Weissberg
 Amy Weisser
 J. Stirling Welch & Caitrin Hall
 Marianne Welch
 Maud Cabot Welch
 Mia Wendel-DiLallo
 Heidi Wendel
 Jennifer Werbitsky
 Meghan Whalen
 George C. Whipple, III & Victoria Meltzer Whipple
 Serena Whitridge
 Clara Wilkinson
 David Williams
 Suzanne Willis
 Victoria & Jeff Wilson-Charles
 Penelope Perkins Wilson
 Suzanne Wilson
 Thomas & Anne Winner
 Michael Winnike
 Eric Wittenberg
 Naomi Wolfensohn
 Dana C. Wolfson
 James & Frances Wood
 Benjamin Yarmolinsky & Kay Murray
 Mai Yee
 Marilyn Young
 Rafael & Dale Zaklad
 Adam Zeligler
 Nile & Linda Ziemba
 Chris Zuehlsdorff & Anita Suchdeo

Corporate, Foundation & Government Supporters

Amalgamated Foundation
 American Farmland Trust
 American Online Giving Foundation
 Anahata Foundation
 Angry Orchard
 Anne Anastasi Charitable Foundation
 Ayco Charitable Foundation
 Berkshire Taconic Community Foundation
 The Berner Family
 Bessemer Trust
 The Campbell Foundation
 The Carrot Project & Third Sector New England, Inc.
 The Christine & Rodman Patton Charitable Fund
 Clif Bar Family Foundation
 Cogitandum
 Community Compost Company, LLC
 Community Foundation of Louisville
 Community Foundations Of The Hudson Valley
 Connecticut Business Systems
 CookFox Architects, LLP
 David & Eleanore Rukin Philanthropic Foundation
 Davines North America

DIG Restaurant Group
 Dolly's LLC
 Doris Duke Charitable Foundation
 Eleutherian Trust Company
 Expanscience Laboratoires
 Fairshare CSA Coalition
 Farm & Field
 Farm Credit East
 Fidelity Charitable
 The Findlay Family Foundation
 FJC - A Foundation of Philanthropic Funds
 The Flood-Gamble Foundation
 Flowerkraut
 Frederic C. Rich Charitable Fund
 Gary Saltz Foundation, Inc.
 Gaskins
 The George Link Jr. Charitable Trust
 Gerald L. Lennard Foundation
 GRACE Communications Foundation
 The Hampton Foundation
 Henry L. Kimelman Family Foundation
 Hudson Valley Farm Hub
 Jewish Communal Fund
 The J.M. Kaplan Fund
 JNR Health & Wellness
 Joshua R. Ginsberg Fund
 Joyce & Irving Goldman Family Foundation
 JP Morgan Chase Bank
 JP Morgan Chase Foundation Employee Giving Program
 The Judah & Michele Kraushaar Family Fund
 K & J Partners, LLC
 Kate J. Solomon Family Foundation
 The Krupp Foundation
 Lavori Sterling Foundation
 Lostand Foundation, Inc.
 The Lowry Rodriguez Family Trust
 Martha & Hunter Grubb Foundation
 Mary Harriman Foundation
 Matriark Foods
 MdeAS Architects
 Metlife Foundation
 Mitten Rock Farm, LLC
 National Financial Services
 National Philanthropic Trust
 Network for Good
 The New York Community Trust
 Niman Ranch
 Citizen Cider
 NoVo Foundation
 Nutrition Incentive Hub, Fair Food Network
 Offit Capital
 Orentreich Family Foundation
 The PCW Management Center, LLC
 Philipstown Garden Club, Inc.
 Pritchard Family Foundation
 Rabe & Co.
 Ralph E. Ogden Foundation, Inc.
 Rise & Root Farm
 Rockefeller Archive Center
 The Russell Berrie Foundation
 The Sands Family Foundation, Inc.
 Schwab Charitable
 Scofield Auctions, Inc.
 Thalle Industries
 The Topfield Foundation, Inc.
 Touchstone Fund
 UBS Financial Services
 USDA - GusNIP
 USDA - BFRDP
 Vanguard Charitable
 The Walbridge Fund, LTD

This list reflects contributions made to Glynwood from January 1, 2020 - May 31, 2021. We have taken great care in compiling this list. In the unfortunate event we have made an error or omission, please accept our sincere apologies and contact Suzy Konecky at 845.265.3338 ext 101 or skonecky@glynwood.org to have the error corrected.

REMEMBERING PENNELOPE PERKINS WILSON

In November 2020, we lost one of our dearest and most important champions: Penny Perkins Wilson. Penny spent a good deal of her childhood at Glynwood when it was her family's home, and remained an active and incredibly thoughtful Board member since the family transitioned the property to become home to Glynwood, the non-profit organization, in the late 1990s.

Her zest for all things good and her amazing generosity - manifest in her extraordinary lifelong philanthropy - will continue to inspire the entire Glynwood team on a personal level. More importantly, Penny's incredible spirit will forever be woven into Glynwood's land and the work she and her family have made possible. What a gift.



People of Glynwood

Kathleen Finlay, President

Mark Daisley, Vice President of Finance and Operations

Liz Corio, Vice President of Development and Outreach (*moving on as of July 2021; Go, Liz! With all our love and support.*)

Programs & Farm

Kate Anstreicher, Program Manager Laura Lengnick, Director of Agriculture

Matthew Ball, Field Operator Dave Llewellyn, Director of Farmer Training

Megan Fimbel, Livestock Hand Jarret Nelson, Farm Manager, Vegetable Operation

Leah Garrard, Assistant Manager, Vegetable Operation June Russell, Director of Regional Food

Michelle Hughes, Associate Director of Regional Food Nicole Scott, Farm Manager, Livestock Operation

Megan Larmer, Senior Director of Regional Food Trixie Wessel, Sales and Outreach Manager

Operations & Facility

Maria Bonsanti, Guest Relations Coordinator Ashley Latham, Director of Social Events

David Cohen, Accountant Sherrie Nachamkin, Bookkeeper

Carmela Frattellone, Director of HR and Administration Ella Schweitzer, Hospitality Assistant

Chris Jennings, Site Assistant Michael Smith, Manager of Administration

Brian Kissane, Site Assistant Russ Terio, Site Manager

Suzanna Konecky, Manager of Individual Giving and Stewardship Neal Tomann, Director of Facilities

Board of Directors

Judith Mogul, Chair

Judah Kraushaar, Co-Vice Chair

Paul N. Watterson, Jr. Co-Vice Chair

Christopher Zuehlsdorff, Treasurer

G. Kirby Brown, Secretary

Scott Berrie • Sezelle Gereau, MD • Steven M. Haggerty • Friedrike Merck

D. Bryce O'Brien, II • Linda Quella • Alexander Reese • Jennifer P. Speers • J. Stirling Welch

Victoria Wilson-Charles • Anne Perkins Cabot, Director Emerita

Financials

Glynwood's Operating Revenue reflects a strong recovery in endowment income since last year's pandemic-related market downturn. Our commitment to regenerative agriculture and food insecurity resonated with donors during this period of economic and health instability, and their support enabled us to deliver on all our core programs. Generous development revenue was bolstered by two PPP loans, which further aided the retention of our workforce. Operating expenses were minimized to pay for essentials and the upkeep of the historic site on which we run our programs. A robust balance sheet leaves us well positioned to be more impactful in the coming years.

Consolidated Statement of Financial Position

Cash and Cash Equivalents	\$ 253,644
Investments and Endowment Funds	\$ 26,789,083
Other Current Assets	\$ 2,717,372
Leasehold Improvements and Equipment (Net)	\$ 2,866,399
Total Assets	\$ 32,626,498
Liabilities	\$ 752,114
Net Assets	\$ 31,874,383
Total Liabilities and Net Assets	\$ 32,626,497

Operating Revenue

Endowment Funding Allocation for Operations	\$ 1,272,000
Individual and Corporate Contributions	\$ 2,204,812
Government and Foundation Grants	\$ 1,067,161
Earned Income	\$ 471,835
Investment and In-Kind Income	\$ 6,445,145
Total Operating Revenue	\$ 11,460,953

Operating Expenses

Fundraising	\$ 249,053
Program Services (including property)	\$ 2,797,702
Administrative	\$ 615,127
Total Operating Expenses	\$ 3,661,882

